

BACK TO SCHOOL 2020-2021

Important



Information

James M. Marlowe Elementary School



IMPORTANT BACK TO SCHOOL INFORMATION

Please use this link to view important documents.



After reviewing, please fill out this form
(one per child).





NEW START DATE & TIME



The Pasco County School Board has approved a two-week delay to the start of the school year. School begins on August 24.

Marlowe's new student hours are 8:40-3:08.



Traditional



mySchool Online



Virtual School

- On August 20 families will be able to see their child's teacher assignment in the Parent Portal.
- Choice options will be frozen from August 20 - 28. Students cannot move between traditional and online learning during this time. This will give schools time to finalize class rosters and schedules.
- Starting August 31, families needing to change their choice option can call the school at (727) 774-8600.

SELF SCREENING

Pasco County Schools expects that all parents/guardians will complete this pre-entry screening tool daily on behalf of their child before the child attends school.

Important Resources:

[Student Self Screener](#)



[Back to School Planning Checklist](#)

[Pasco ReOpening Guide](#)

[Talking to Children About Covid](#)



FACE COVERINGS

Pasco County Schools have mandated that all employees, visitors, and students wear a mask or other face covering while on school property and/or engaged in school activities. For the purpose of this rule, face coverings will be interpreted broadly to include items like masks, face shields, scarfs, bandannas, and fishing buffs.

Pasco's
Face
Covering
Policy



Why Are
People
Wearing
Masks?



WHAT IS A COHORT?

At the elementary school level, we are using a cohort isolation model. Students will spend the school day with the group of students in their class. Interaction with students from other classes will be limited to the greatest extent possible. If a student displays symptoms of illness resulting in a Covid diagnosis, it will likely impact their cohort, and not the entire school, in terms of quarantine or other interventions.



MEET THE TEACHER

Due to current guidelines, our procedures to start off the school year have changed.

- Individual appointments to meet your child's teacher will be scheduled during planning week (August 17-21). Appointments can be done in person or virtually.
- Traditional and mySchool Online teachers will contact families on Monday the 17th to schedule appointments and provide more information.
- Face-to-face appointments will be limited to one parent/guardian and the individual child. No visitors will be allowed on campus without an appointment.
- Families choosing traditional learning are encouraged to bring supplies to school at your scheduled time.



REMEMBER!



(813)-346-1900
eschool.pasco.k12.fl.us

If you chose option 3, Virtual School, you will need to contact Pasco eSchool for registration and orientation dates and times.

A

SCHOOL SUPPLIES

Due the new health/safety procedures, students will have personal school supplies. All items will need to be labeled and stored in the classroom for student use.

Updated supply lists for traditional and mySchool Online students can be accessed at <https://jmms.pasco.k12.fl.us/> or [JMMES Facebook](#)



B



James M. Marlowe Elementary School Supply Lists 2020-21

Mask are required to be worn by all staff, students, and visitors on campus.

Grade:	Student Items Needed:	Additional Requests:
PreK	Change of clothes Extra pair of shoes Diapers/pull-ups (if worn) Anti-bacterial wipes Blanket and/or something to cuddle with Backpack	Tissues Clorox wipes Hand sanitizer Crib sheet
K	Ticonderoga Pencils Full-sized Metal or Plastic Pencil Box Fiskars Children's Scissors 2 - Sturdy Pocket Folders 2 - Boxes of Tissues 4 - 24 Packs of Crayola Crayons 1 Pack of Crayola Markers 1 Pack of Crayola Colored Pencils 1 Pack Crayola Watercolor Paints Expo Dry Erase Markers 12 - Glue Sticks Large Pink Erasers Headphones Labeled with Child's Name	More Glue Sticks, Pencils, and Crayons Quart or Sandwich Ziplock Bags Gallon Ziplock Bags Clorox Wipes Baby Wipes Hand Sanitizer 12 oz or Larger Paper Towels Play Dough Colored Pencils Shaving Cream
1st	2 - 1-subject wide ruled composition notebooks 1 pack pink erasers 4 - 24 packs Crayola Crayons 1 Pack of Crayola Markers 1 Pack of Crayola Colored Pencils 1 Pack Crayola Watercolor Paints 2 boxes of tissues 2 boxes wet wipes 1 pack of thin dry erase markers (black) 1 ream of white copy paper 1 pack of #2 Ticonderoga pencils 1 pair of scissors 12 glue sticks 1 pencil box (8 x 5 X 2 ½) 1 headphone set	Treasure box treats or toys More dry erase markers Napkins or paper towels Plastic spoons Stickers Boys - 1 box quart size Ziploc bags Girls - 1 box gallon size Ziploc bags
2nd	4 Boxes of Ticonderoga Pencils 2 Packs of Expo Black-dry Erase Markers 1 Bottle of Hand Sanitizer 2 Boxes of Tissues 1 Pack of Crayola Colored Pencils 2 - 24 Pack of Crayola Crayons 1 Pack of Crayola Markers 1 Pack Crayola Watercolor Paints 1 Pair of Fiskar Scissors 2 Plastic Folders with Pockets and Prongs 6 Packs of Elmer's Glue Sticks 2 Wide Ruled Spiral Notebooks 2 Wide Ruled Composition Notebooks 1 Pack of Pink Erasers 4 Packs of Baby Wipes 1 Packs of Yellow Highlighters 1 Ream of Copy Paper	Black Expo Markers Notebook Paper Sheet Protectors Hand Sanitizer Gallon Bags Highlighters Copy Paper Paper Towels 2 Packs of Lysol/Clorox Wipes Girls - 2 Boxes of Sandwich Bags Boys - 2 Boxes of Snack Bags



Grade:	Student Items Needed:	Additional Requests:
3rd	2 or more packs of Printer paper 3 notebooks – composition notebooks 4 plastic pocket -folders with 3 prongs 1 inch planner binder 4 glue sticks 1 pack of Pink pearl type erasers 1 package of 4 Thin black expo markers 1 standard-size plastic pencil box 24 Pack of Crayola Crayons 1 Pack of Crayola Colored Pencils 1 Pack of Crayola Markers 1 Pack Crayola Watercolor Paints Highlighters 1 pair of Fiskar Scissors 2 packages of #2 yellow pencils 2 boxes of tissues 1 hand sanitizer	Additional packs of printer paper Lysol wipes 1 pair of earphones, optional
4th	1 pack of highlighters 1 – 2" binder 1 – 3" binder 1 pack of colored pencils 1 soft pencil pouch 4 composition notebooks 2 packs of pencils 24 Pack of Crayola Crayons 1 Pack of Crayola Colored Pencils 1 Pack of Crayola Markers 1 Pack Crayola Watercolor Paints 1 pair of Fiskar Scissors 1 pack of erasers 1 pack of WIDE-RULED paper 1 pack of glue sticks 1 box of gallon-size Ziplock baggies 1 pair of throw-away socks 4 folders with pockets 1 set of earbuds OR headphones 3 personal size hand sanitizers 2 reams of copy paper	EXPO dry-erase markers (any colors) Construction paper (all colors) Boxes of tissues Refill size bottles of hand sanitizer Antibacterial hand soap Anti-bacterial wipes or baby wipes Paper towels
5th	4 Black and White Composition Notebooks 2 packages of lined paper 5 rolls of scotch tape 10 Glue Sticks 1 - 24 Pack of Crayola Crayons 1 Pack of Crayola Colored Pencils 1 Pack of Crayola Markers 1 Pack Crayola Watercolor Paints 1 pair of Fiskar Scissors 5 packages of 24 count pencils 1 package of yellow highlighters 3 packages of pencil top erasers 5 packages of 3"x3" yellow sticky notes 1 set of ear buds (labeled with full name)	Printer paper Dry erase markers Clorox wipes Hand sanitizer Facial tissue Girls 4 boxes of face tissue 2 bottles of hand sanitizer 2 boxes gallon Ziplock bags Boys 4 boxes of face tissue 2 bottles of hand sanitizer 2 containers of Clorox wipes



We will schedule "Meet-the-Teacher" appointments during planning week. Families are welcome to bring supplies to school at this time. Due the new health/safety procedures, students will have **personal school supplies**. All items will be labeled and stored in the classroom for student use. My School Online students can access a recommended supply list for home use on our website: www.jmmes.pasco.k12.fl.us.



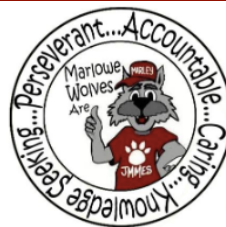
Recommended School Supply List 2020-2021

Supplies for Success:

- | | |
|--|--|
| <input type="checkbox"/> Internet Access | <input type="checkbox"/> Notebooks/
Journals |
| <input type="checkbox"/> A reliable device
(computer, iPad, or
tablet) | <input type="checkbox"/> Dry Erase Board |
| <input type="checkbox"/> A designated
workspace | <input type="checkbox"/> Dry Erase Markers |
| <input type="checkbox"/> Pencils | <input type="checkbox"/> Highlighters |
| <input type="checkbox"/> Pencil Sharpener | <input type="checkbox"/> Scissors |
| <input type="checkbox"/> Sticky Notes | <input type="checkbox"/> Glue Stick |
| | <input type="checkbox"/> Crayons/ Color
Pencils |

Optional Supplies for Success:

- ☐ Printer Access
- ☐ Flash Drive (USB)
- ☐ Earbuds or Headphones
- ☐ Timer



MEDICATION DROP OFF

- Families needing to bring medication to school for their child are required to make an appointment for Friday, August 21st.
- Please read over the medication guidelines carefully to make sure you have everything you need for the clinic to administer the medication successfully.
- During your scheduled appointment time Jessica will meet you at your car and social distancing guidelines will be followed.

Jessica Maruna, Clinic Assistant
Google Voice # (813) 708-9128




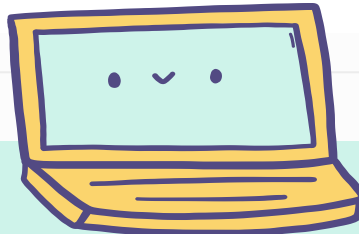


myStudent Parent Portal



The Parent Portal plays a vital role in the home-school connection. This is where families access report cards, progress reports, attendance, and other important information.

- Click myStudent to create your account or to login. Use this link  for directions on how to set up your account.
- Families of students who are currently enrolled and do not have access, an email has been sent to you containing your Student ID and Parent PIN.
- Kg and New to Pasco parents, if you did not receive your Parent PIN or Student ID, please call the school, (727) 774-8600.

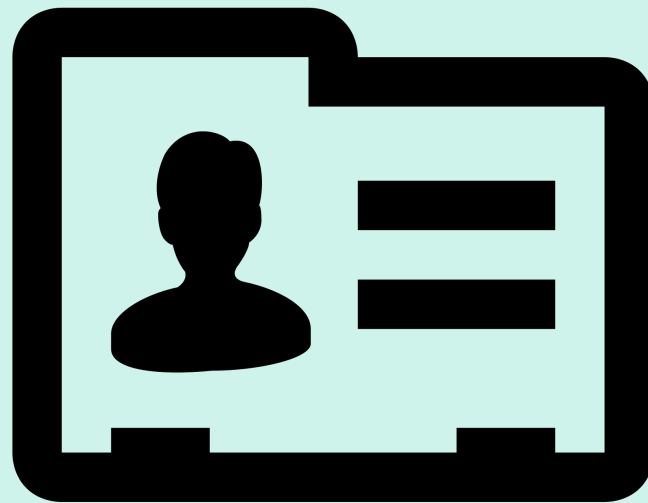


B

EMERGENCY CARDS



- ✓ We will be using electronic emergency cards in myStudent Parent Portal.
- ✓ Emergency Card information MUST be completed prior to the first day of school for students.
- ✓ Students without complete emergency cards will not be permitted on campus until one is completed.



Click below for assistance:

[Video Directions](#)



[Written Directions](#)





Car Riders

- Students may be dropped off between 8:20-8:40. Students are required to remain in their cars until greeted by a staff member.
- Any student on campus prior to 8:20 is considered trespassing.
- Parents will not be allowed to walk students to class or enter campus beyond the gates.
- All students must wear a mask and maintain social distancing when on campus..
- Students arriving after 8:40 a.m. will need to report to the front office for a tardy slip. Entry gates will be locked at this time.

ARRIVAL

Walkers

- Students may arrive between 8:20-8:40.
- Students are not permitted to congregate around school grounds before school starts.
- Any student on campus prior to 8:20 is considered trespassing.
- Parents will not be allowed to walk students to class or enter campus beyond the gates.
- All students will wear a mask once they enter school property.
- Students will walk through the main gate practicing social distancing.
- Students arriving after 8:40 a.m. will need to report to the front office for a tardy slip. Entry gates will be locked at this time.





Kindergarten Arrival First Week

Parents of Kindergarteners will be given a one-week escort pass allowing them to walk their child to class for the first five days of school.

Please have pass visible, wear masks and follow the schedule below:

8:20 Child's Last Name A-H

8:30 Child's Last Name I-P

8:40 Child's Last Name Q-Z





BREAKFAST

Complimentary breakfast is available to all students every day.



**Red Breakfast
Station
will serve K and 1**

**Yellow Breakfast
Station
will serve 2 and 3**

**Orange Breakfast
Station
will serve 4 and 5**

- Students will be expected to keep their mask on and maintain social distancing while waiting in line.
- Students will eat breakfast in their classroom.
- There will be no share bin and no sharing of food.

LUNCH



- Students will sit with their class cohort. Students will be spaced out with at least one seat between each student and no one directly across from them.
 - There will be no share bin and no sharing of food.
 - Cafeteria bathrooms will not be available during lunch.
 - Trash cans will be brought to tables for dumping trash and trays into garbage.
 - Two adult helpers will monitor students and custodial staff will thoroughly clean/sanitize all tables and seats between classes.
 - Each class has 30 minutes for lunch. The schedule must be strictly followed to ensure proper cleaning between classes.
- *In an effort to limit exposure, families will not be permitted on campus for lunch.*





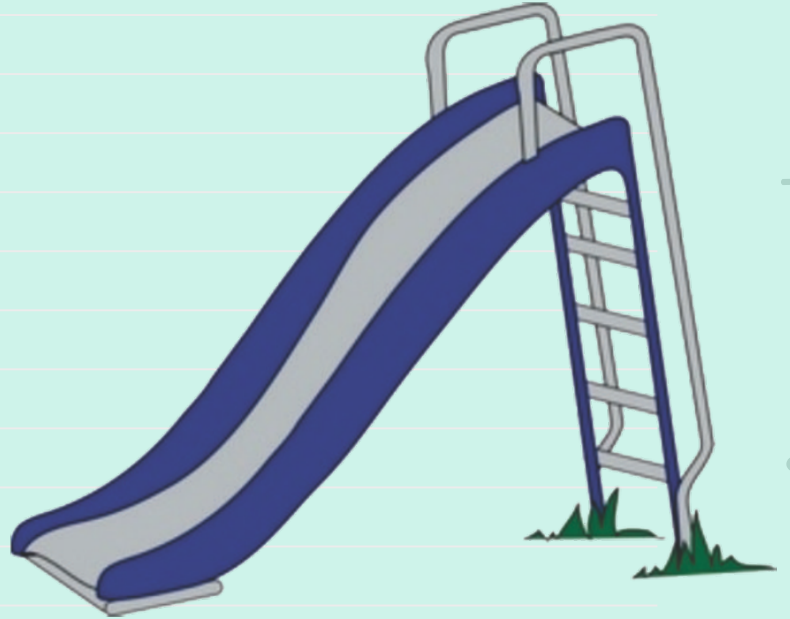
There will be NO visitors permitted on campus, during school hours or without an appointment.

Volunteers must be approved and will be limited to non-classroom supports. Contact your child's teacher if you are interested.



RECESS

- There will be designated areas for classes with a schedule. Areas include:
 - Playground
 - East side of car loop
 - West side of car loop
 - Media
 - Music Room
 - Classroom
- Students will stay with their cohort.
- Playground will be used on a rotation with cleaning after each class.
- Students are required to wear a mask at recess.
- Each class will be provided recess equipment which will be sanitized daily.



Donations for recess equipment is greatly appreciated. Please contact your child's teacher for ideas.

DISMISSAL



K-1 CAR RIDERS

- At 3:05 Classroom teachers will walk students to the front covered area and students will sit East/West side with cohorts in individual colored boxes.
- All students must wear masks and practice social distancing while on campus.
- Students will go to car lane number when name is called.

K-1 WALKERS

- A staff member will gather K-1 PLACE students and escort them to the Cotee River bus. Face masks will be required on school buses.
- A staff member will take K-1 Dahlia gate walkers to their dismissal area.
- Classroom teachers will escort front gate walkers to their dismissal area.
- All students must wear masks and practice social distancing while on campus.
- Parents are expected to wait in designated area and must wear a mask while on campus.



DISMISSAL

2nd CAR RIDERS

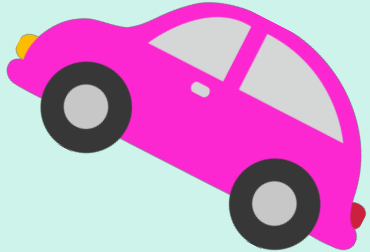
- At 3:05 Classroom teachers will walk students to the media and sit by cohort.
- All students must wear masks and practice social distancing while on campus.
- Use ClassTag to notify your child's teacher(s) when entering parking lot.
- Students will go to car lane number when name is called.

3rd-5th CAR RIDERS

- At 3:05 Classroom teachers will walk students to their designated hallway East or West and sit by cohort in the hallway.
- All students must wear masks and practice social distancing while on campus.
- Use ClassTag to notify your child's teacher(s) when entering parking lot.
- Students will go to car lane number when name is called.

2nd -5th PLAGE and WALKERS

- At 3:05 an all call will be announced dismissing PLAGE and Walkers. Students grades 2-5 will walk unescorted to their dismissal routes.
- All students must wear masks and practice social distancing while on campus
- Face masks will be required on school buses.
- Adults will be assigned to monitor hallways.





If you have any
questions or concerns
please call the school at
(727) 774-8600 or use
Let's Talk!