



# JAMES M MARLOWE ELEMENTARY

## PARENT & FAMILY ENGAGEMENT PLAN 2025-2026

Our school believes in the vital role that parents and families play in the educational journey of our students. We view family involvement as a cornerstone for successful learning outcomes. This plan serves as a guide to foster collaboration and nurture the home-school connection, encouraging your participation in your child's education.



### Our Vision

We see each family as an essential partner in supporting the academic, social, and emotional development of our students. We aim to work together to nurture an environment of lifelong learning and growth.

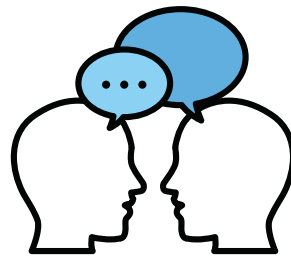


### Core Principles

- 1. Respectful Partnerships:** We respect the strengths and individuality of each family and value their contributions.
- 2. Effective Communication:** Clear, consistent, and two-way communication is essential to build trust and understanding.
- 3. Collaborative Decision-Making:** Families play a crucial role in making decisions that affect their children's education.
- 4. Continuous Learning:** We encourage and support families in their role as educators at home.

## Our Strategies

- Parent-Teacher Conferences
- Data chats with dinner!
- Parent Workshops & Seminars
- Volunteer Opportunities
- SAC & PTO
- Family Fun Events
- Academic Breakfasts
- Art & Music Showcases



## Communication

We will use a variety of communication tools to ensure that all families have access to information and can effectively communicate with the school. These include:  
take home folder with calendars,  
School website, parent portal, emails,  
text messages, Facebook, connectEd,  
etc.



**As a parent or family member, your involvement is crucial in implementing this plan.**

